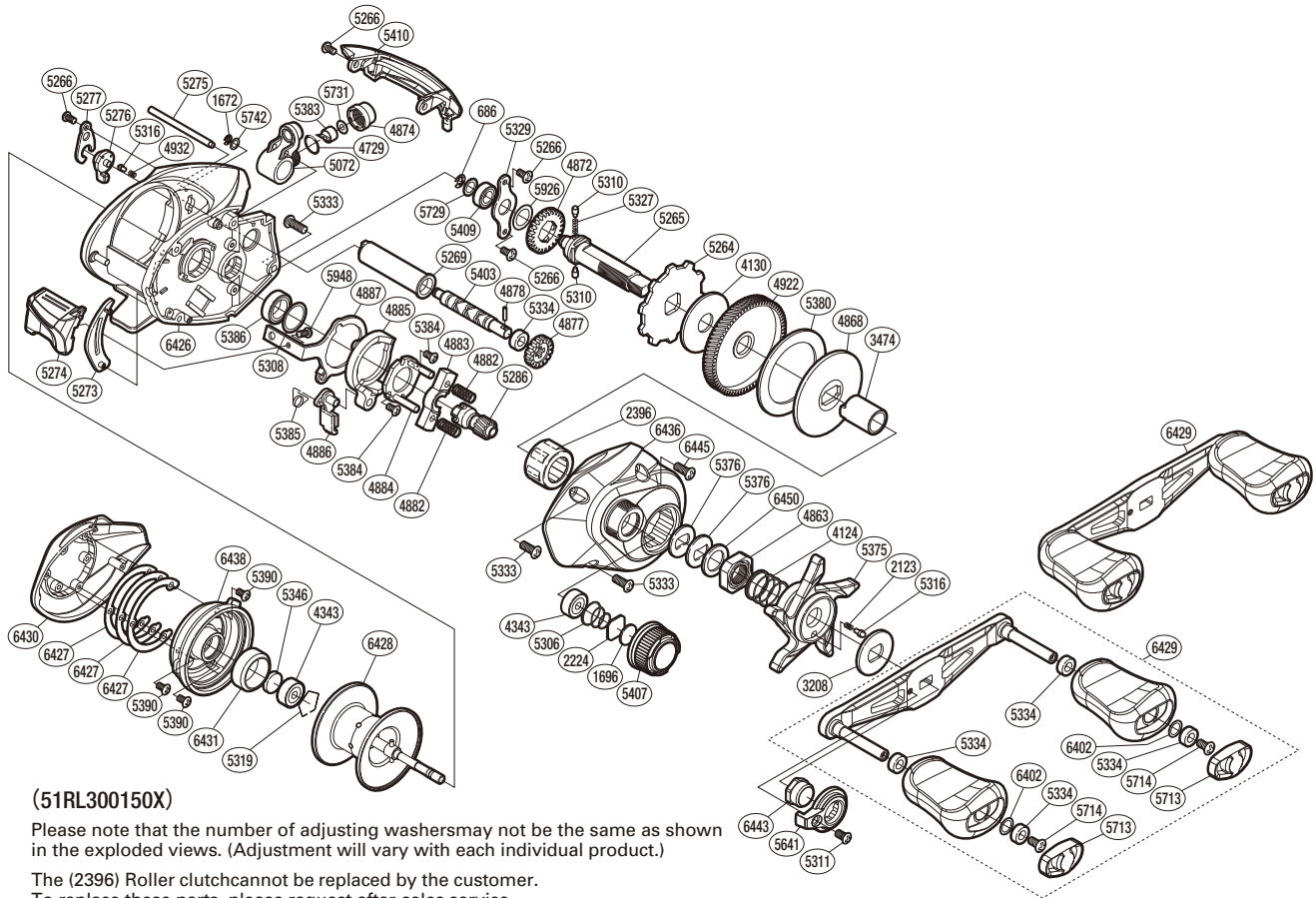


# SHIMANO

## CAIUS

## CIS150HGB



(51RL300150X)

Please note that the number of adjusting washers may not be the same as shown in the exploded views. (Adjustment will vary with each individual product.)

The (2396) Roller clutch cannot be replaced by the customer.  
To replace these parts, please request after-sales service.

Part No.	Description	Part No.	Description	Part No.	Description
BNT0686	E Lock	BNT5264	Anti-Reverse Ratchet	BNT5386	Ball Bearing
BNT1672	E Lock	BNT5265	Drive Shaft	BNT5390	Screw
BNT1696	Cast Control Spacer (B)	BNT5266	Screw	BNT5403	Worm Shaft
BNT2123	Click Spring	BNT5269	Level Wind Guard	BNT5407	Cast Control Cap
BNT2224	Cast Control Spacer (A)	BNT5273	Clutch Bar Guide B	BNT5409	Drive Shaft Bushing
BNT2396	Roller Clutch Bearing	BNT5274	Clutch Button	BNT5410	Level Wind Protector
BNT3208	Star Drag Click Plate	BNT5275	Stabilizer Bar	BNT5641	Handle Nut Plate
BNT3474	Roller Clutch Inner Tube	BNT5276	B Side Plate Cam Lever	BNT5713	Handle Knob Seal
BNT4124	Star Drag Spring	BNT5277	Cam Lever Retainer	BNT5714	Screw
BNT4130	Drag Washer A	BNT5286	Pinion Gear	BNT5729	Washer
BNT4343	Ball Bearing	BNT5306	Spool Tension Spring	BNT5731	Washer
BNT4729	O Ring	BNT5308	Washer	BNT5742	Washer
BNT4863	Star Drag Nut	BNT5310	Idle Gear Pin	BNT5926	Washer
BNT4868	Key Washer	BNT5311	Screw	BNT5948	Screw
BNT4872	Idle Gear A	BNT5316	Click Pin	BNT6402	Washer
BNT4874	Pawl Cap	BNT5319	Bearing Retainer	BNT6426	Frame Assembly
BNT4877	Idle Gear C	BNT5327	Idle Gear Spring	BNT6427	Washer
BNT4878	Worm Shaft Pin	BNT5329	Drive Shaft Retainer	BNT6428	Spool Assembly
BNT4882	Yoke Spring	BNT5333	Screw	BNT6429	Handle Assembly
BNT4883	Yoke	BNT5334	Handle Knob Bushing B	BNT6430	Left Side Plate
BNT4884	Clutch Cam Retainer	BNT5346	Bearing Spacer	BNT6431	Brake Ring
BNT4885	Clutch Cam	BNT5375	Star Drag	BNT6436	Right Side Plate
BNT4886	Clutch Pawl Assembly	BNT5376	Drag Spring Washer	BNT6438	Dial Case
BNT4887	Clutch Plate	BNT5380	Drag Washer C	BNT6443	Handle Nut
BNT4922	Drive Gear	BNT5383	Line Guide Pawl	BNT6445	Screw
BNT4932	Click Spring	BNT5384	Screw	BNT6450	Star Drag Spacer
BNT5072	Line Guide Pawl Holder Assembly	BNT5385	Clutch Pawl Spring		